

# Linea

90M YACHT. THE NEW HORIZON



**FINCANTIERI**  
YACHTS

TECHNOLOGY OF BEAUTY





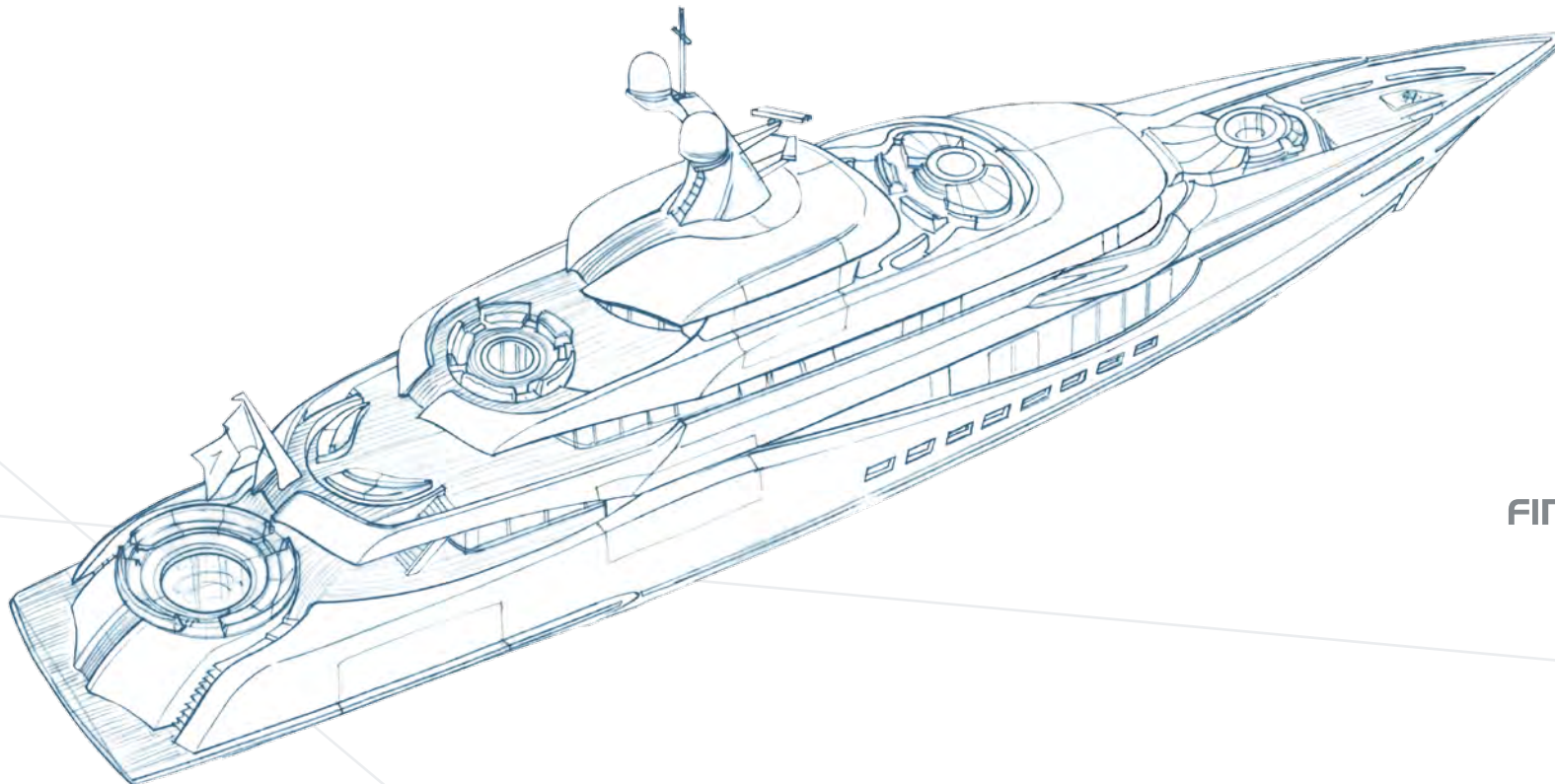
LINEA - 90M YACHT. THE NEW HORIZON - designed by CLAYDON REEVES and MARCH & WHITE specially for FINCANTIERI YACHTS

# FINCANTIERI YACHTS TECHNOLOGY OF BEAUTY

---

Fincantieri yachts are products of outstanding quality. They are the final result of a special synergy of advanced technical, design and construction capabilities, perfected over more than two centuries of experience building all types of oceangoing vessel. We infuse into every yacht the passion for quality and a keen eye for detail stemming from the experience of generations of skilled engineers, craftsmen and leaders that are the Fincantieri team. They operate together in sophisticated yards like Muggiano supported by the world's finest yachting subcontractors.

Vessels are designed and constructed with precision under the watchful eye of skilled project managers, combining the best design and production techniques with managerial expertise at the disposal of discerning owners who seek excellence, in an open and proactive interaction that is pleasant, flawless and rewarding.



  
**FINCANTIERI**  
YACHTS

# “DISTINCTIVE AND PROGRESSIVE DESIGNS”

---



Founded by James Claydon and Mike Reeves, Claydon Reeves is a diverse studio driven by a strong passion to create and deliver distinctive and progressive designs through a client driven process.

With experience across a range of disciplines, from luxury interior and furniture design to automotive and yacht design, the team has been involved in the design and build of a multitude of yachts between 30 and 100m at many of the world's premier shipyards.

Linea is a collaboration between Fincantieri and Claydon Reeves that developed from a conversation at the Monaco Yacht Show. The Project demonstrates how the collaboration of a design studio and a shipyard can produce a superyacht of functional and aesthetic beauty.



CLAYDON REEVES  
*Exterior Design*

# “STORYTELLING TROUGH DESIGN”

---



March & White is a premium luxury design studio, responsible for intelligent, modern, luxury design at the highest level. We deploy our unique take on the best of British design to our global audience.

Interior design, architecture and yachting are the departure for projects that demand an extraordinary level of design. Our signature is to bring the best of residential living to superyacht interiors. Our unique combination of expertise ensures our clients lifestyle is truly expressed in an expansive way through the design of their Superyacht.

We are storytellers. Everything we design, curate and compose is a meticulous response to our clients' desire. To call them projects is short of the mark. They are stories. The client is always a central character. They explore the notion of elegance and timeless style.



MARCH & WHITE  
*Interior Design*





# Linea

90M YACHT. THE NEW HORIZON

Length overall	91.85 m
Max beam	14.0 m
Full load draught	4.0 m
Gross tonnage	2,550 GRT
No. of decks	6
Owner and guests cabins	6
Owner and guests capacity	12
Crew and staff cabins	14
Crew and staff capacity	25
Propulsion system	2 diesel engines driving fixed pitch propellers
Propulsion engine power	2 x abt. 2,350 kW
Maximum speed (100% power)	abt. 18.0 kn
Nautical range at 12 kn	abt. 5500 nm
Generators	2 x abt. 400 ekW + 1 x 350 ekW
Bow thruster (super silent type)	1 x abt. 300 kW
Stern thruster (super silent type)	1 x abt. 150 kW
Stabilizers	2 pairs fixed – at anchor stabilization
Max tender length	10.0 m



**FINCANTIERI**  
YACHTS

# A FLOW FROM BOW TO STERN, WITH A TAUGHT, MEANINGFUL SNAP

---

The aim was to create a superyacht that embodied the great classic Italian traditions combined with a modern design sensibility. The use of space, the nature of life on the sea and the lifestyle that can be achieved has led to an exterior design that is intriguing in detail and pure in its concept. Perhaps the most unique feature is the owner's forward deck, which can be privately accessed through the master cabin. Providing expansive views of the approaching seascape, this space has been carefully designed so as not to be overlooked by the bridge sight lines.







EXTENSIVE BEACH CLUB

While at anchor, the many folding balconies and shell doors can be deployed, allowing the large custom tenders to be launched and the extensive beach club to be opened. The most forward part of the deck is used as a touch-and-go helipad with access to the bow below.

# THE INSTINCTIVE ELEGANCE OF ITALIAN FASHION

The story here is something different. An exquisite yacht interior inspired by the instinctive elegance of Italian fashion. The creative intuition flows throughout the interior. Unique, precious and beautifully textured surfaces are composed and evolved in the way a fashion designer pieces and shapes a couture collection. Never obvious or literal. In the most beautiful sense, nothing is quite as it seems. The palette is dark sultry tones, beautifully engineered metal edge details and the gentle allure of sublime and intelligent lighting. All elements in this composition are of an interior which is evocative, atmospheric and the definition of confident and timeless style.



SIDE PRIVATE ENTRANCE





SUN DECK - ULTIMATE CATWALK





MAIN DINING ROOM

## A MAGICAL SETTING. THE DINING EXPERIENCE IS EXALTED TO SACRED STATUS

---

The interior and exterior has been painstakingly designed to enable a near unobstructed 180° view. Retractable bronze louvers offer discrete privacy. The graphic linearity of the design accentuates the imposing height of the ceilings. The perfect balance of textural opulence and the soft glow of beautiful surfaces, bathed in sumptuous light.



# THE SPIRIT OF ABANDON AT ITS MOST ELEGANT



The space enjoys the privilege of privacy and intimate comfort with the sublime wonder of unobstructed views to the aft. A dramatic double height glass atrium visually connects with the deck below.

MAIN SALOON





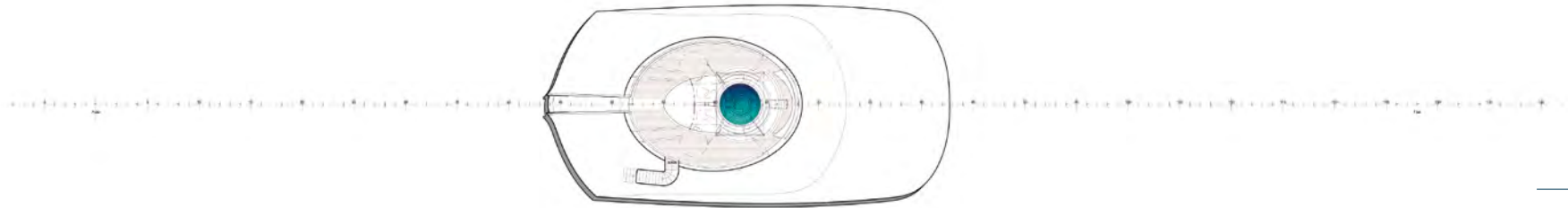
Intelligent use of space creates the last word in effortless comfort paired with dramatic elegance. It is simply the most exclusive and beautiful after party space on the Riviera, or anywhere. An imposing signature central bar forms a gorgeous transition between dining and relaxing with a portal to the deck.

# Linea

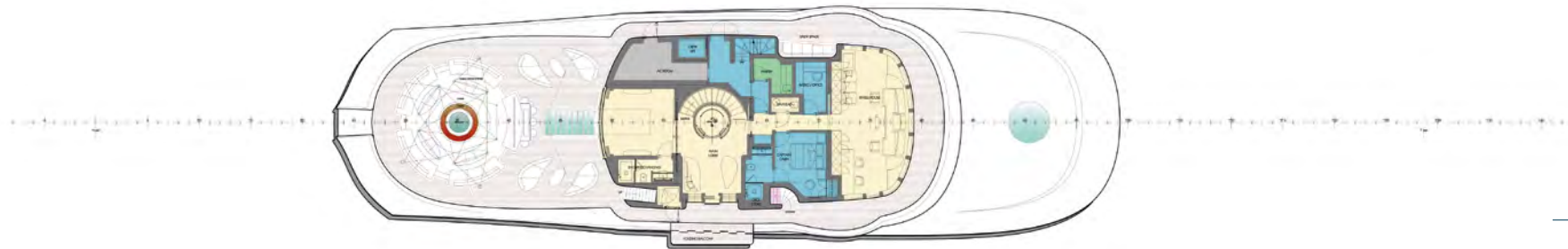
90M YACHT. THE NEW HORIZON



PROFILE



6 - FLYING BRIDGE



5 - BRIDGE DECK



4 - OWNER'S DECK

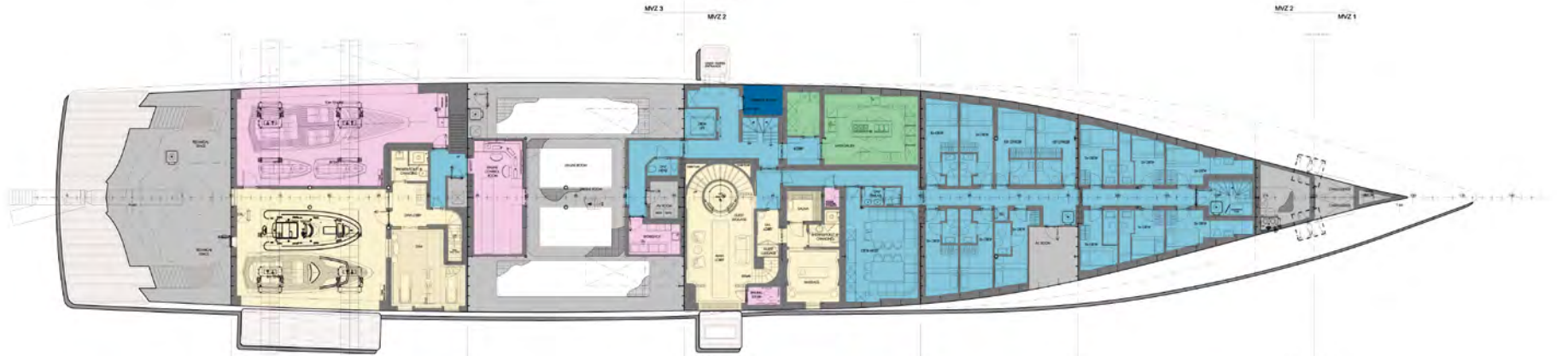




3 - MAIN DECK



2 - LOWER DECK



1 - TANK DECK









**FINCANTIERI**  
YACHTS

TECHNOLOGY OF BEAUTY